

RUBBER

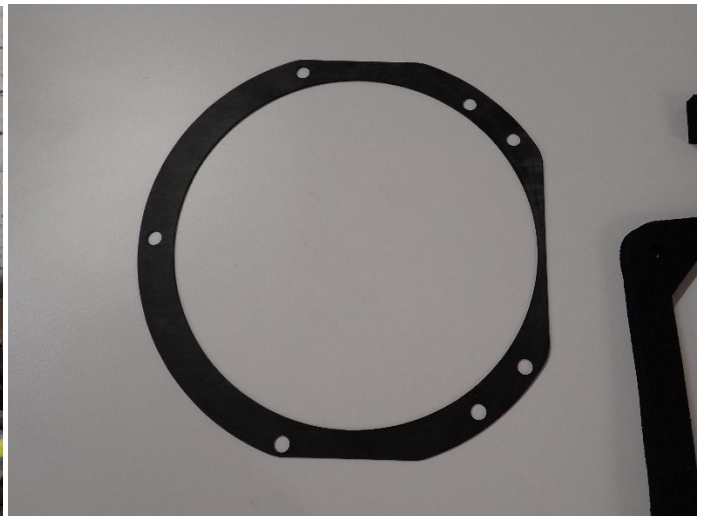
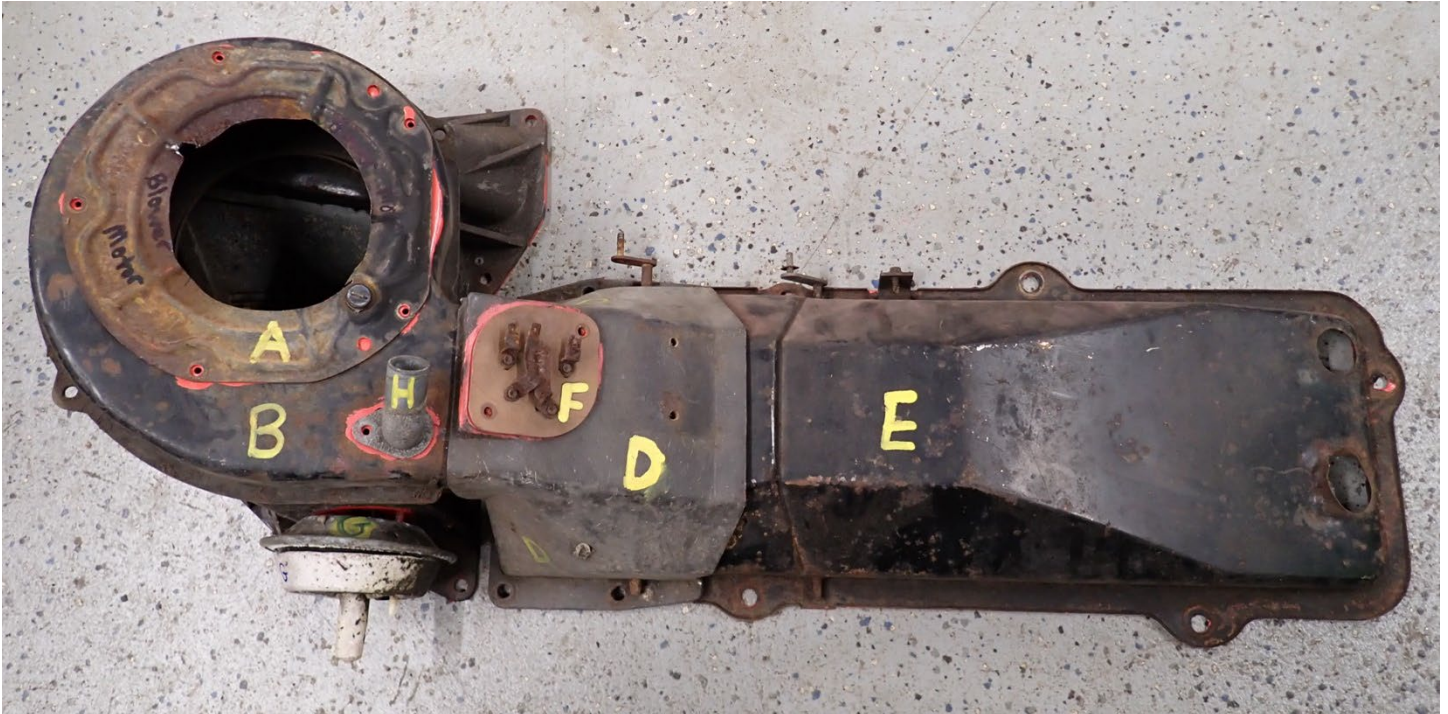
the Right Way

63-65 Riviera Heater Box Seals

This is a complete heater box seal/gasket set. This kit includes seals even in places where there were no seals from the factory. Depending on the application (year, factory air conditioning), not all gaskets will be used.

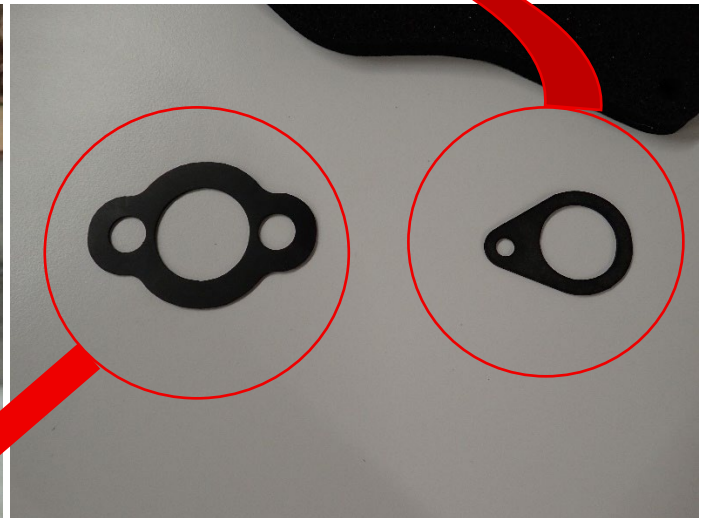
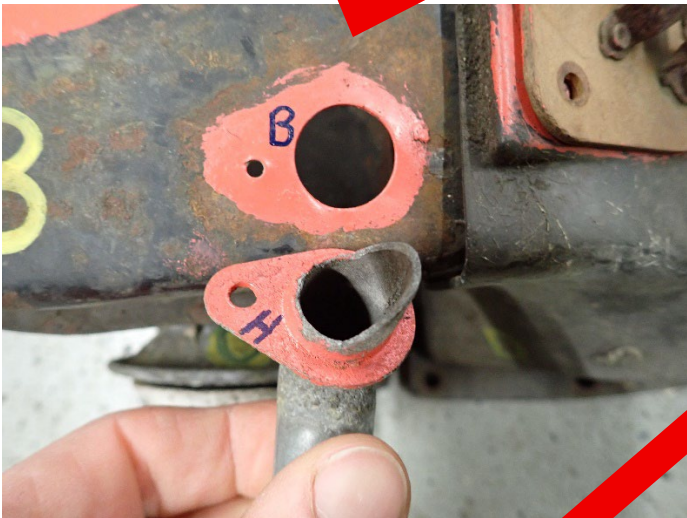
I recommend “gluing” all seals to one side of the piece, letting dry, and then installing to the adjacent piece. For “glue,” I would recommend contact cement or trim adhesive.

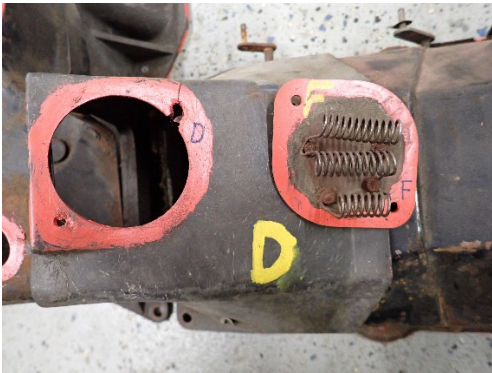
Please use the pictures below as a reference. The letters refer to the different heater box parts. All mating surfaces painted red in the pictures below receive a gasket.



Part "A" is the actual blower motor (the picture only shows the flange of the blower motor). The seal on the right goes between the blower motor and the blower motor housing.

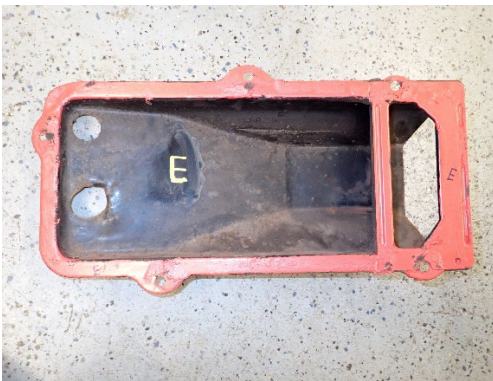
Part "B" is the blower motor housing.



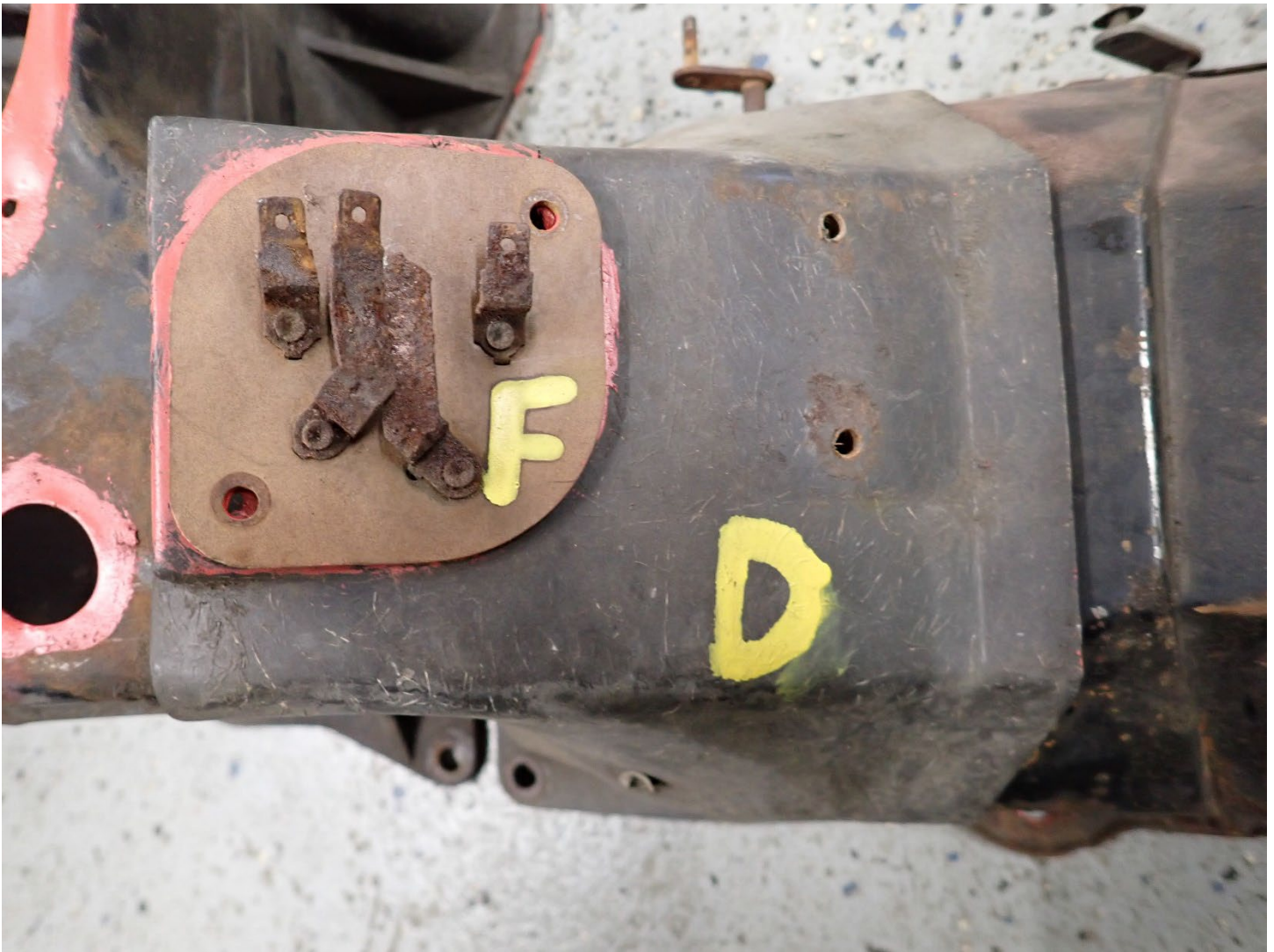




Rectangle piece goes in groove on the backside of the fiberglass piece "C"



"I" & "J" are the exact same piece (it does not matter which side of the door you glue these to.)



Part “D” is a fiberglass housing. Part “D” is what you need to cut and install the butyl onto. The butyl goes between the fiberglass housing and the metal blower motor housing in the left of the picture above and between the fiberglass housing and the metal heater core cover in the right of the picture above.